

Customer :

customer

Customer part :

customer part

Comment :

Comment

S1=0.02

S2=0.14

Tmax=573

Tp S2=612.0

PI=0.12

HI=26

Sample =5451.40

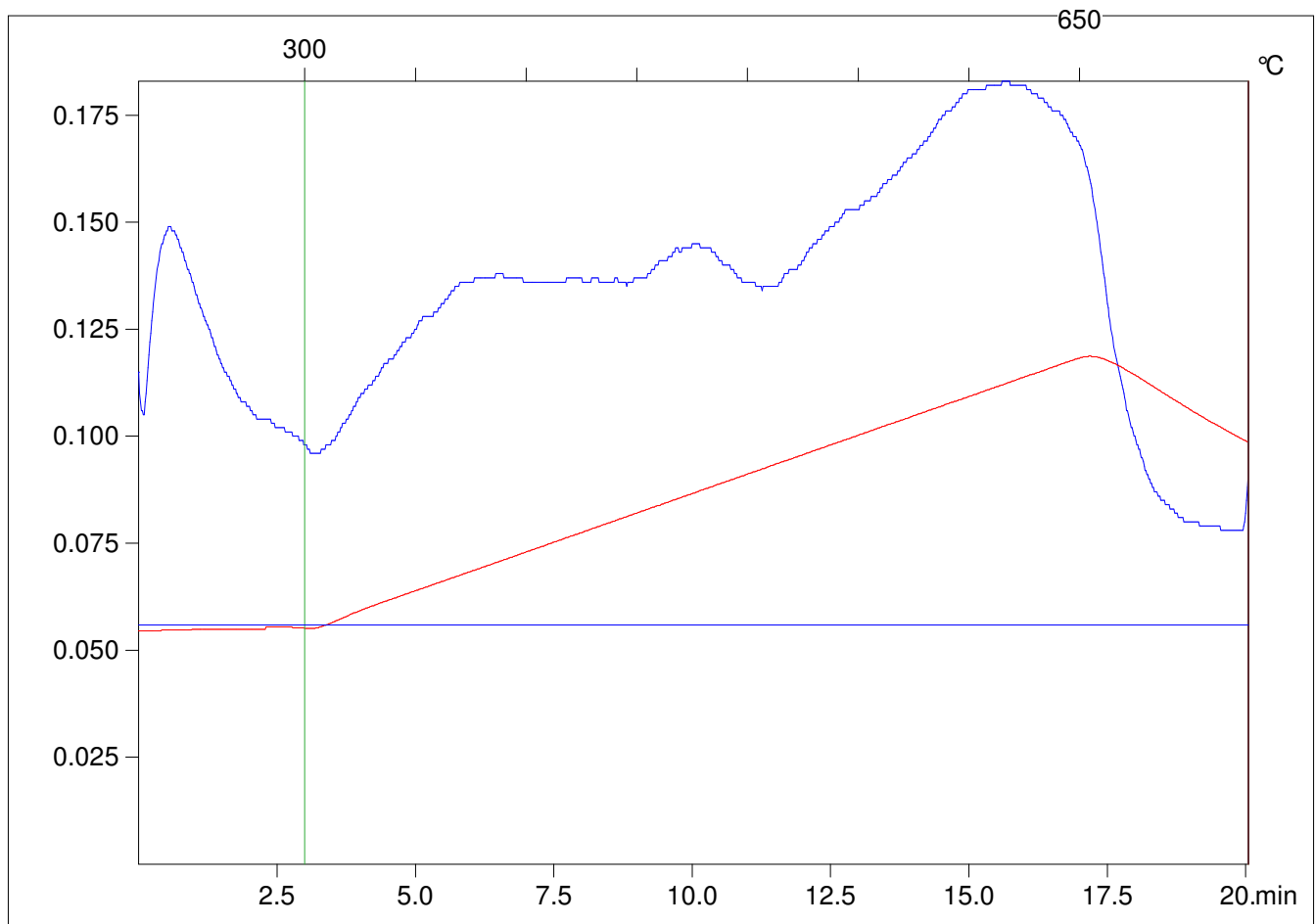
Method =Bulk Rock

Cycle=Basic

KFID(10\*9)=1167

Qty =70.3

TOC=0.54



C:\VINC\PK141015\PK025.R00 : FID pyrolysis graphic

State

Pyro Status

Oxi Status